



**Ty Pennington**  
Lapolla Spokesman  
Host of Extreme Makeover: Home Edition

Contact us today at **1.877.636.2648** or [info@lapolla.com](mailto:info@lapolla.com).

[www.Lapolla.com](http://www.Lapolla.com)

**ICYNENE**  **LAPOLLA™**

©Copyright 2018 Icynene-Lapolla. All rights reserved. Foam-LOK® is a trademark of Icynene-Lapolla  
in the US & other countries. 15402 Vantage Parkway East, Suite 322, Houston, Texas 77032.  
LF-102 Updated 02.09.18

The Best-in-Class  
Insulation Solution for...

- Energy Efficiency
- Energy Cost Savings
- Indoor Air Quality
- Indoor Comfort
- Resilient Construction

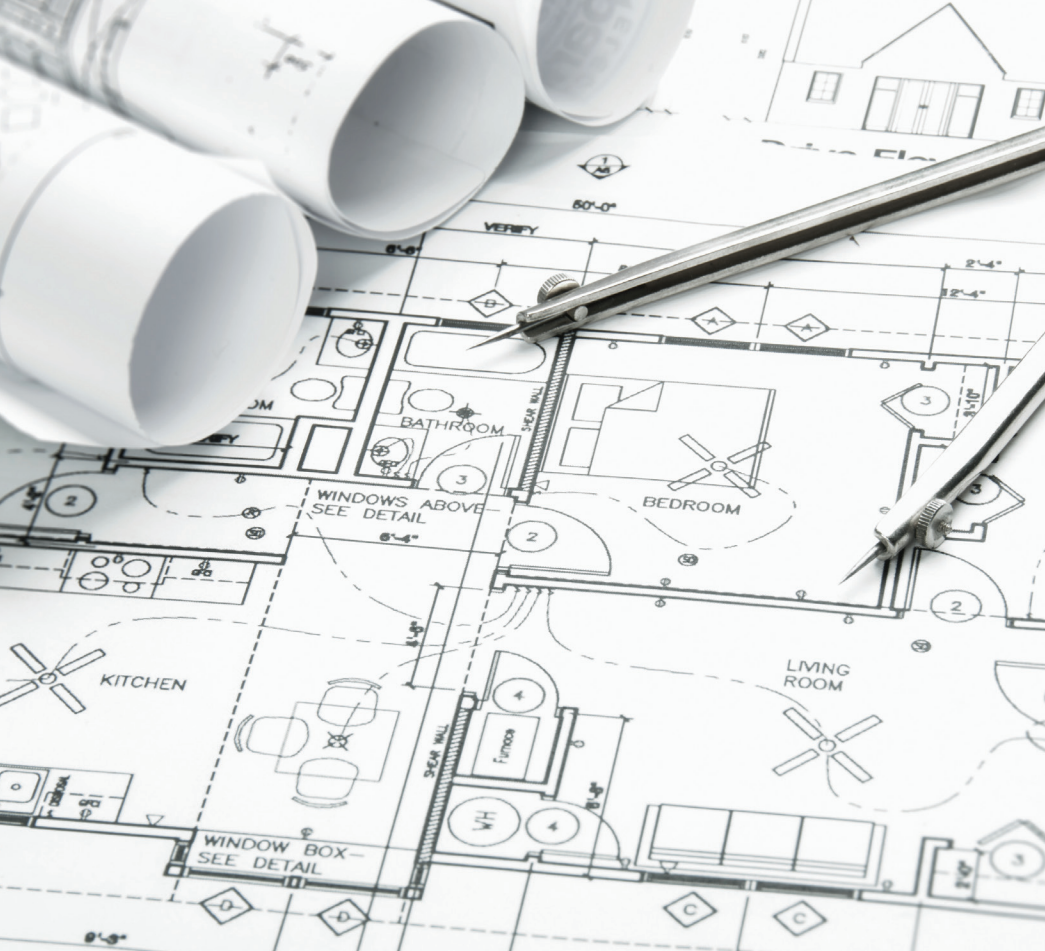
# DELIVERING COMFORT BY DESIGN

**Lapolla FOAM-LOK®**

**Spray Polyurethane Foam**







## WHY SPRAY POLYURETHANE FOAM INSULATION?

Spray foam is a lightweight, durable, and versatile insulation solution boasting the industry's strongest performance in energy efficiency and energy cost savings. This insulation is the optimal solution for residential and commercial structures of all architectural styles.

- Fully adhered to most construction substrates
- Professionally installed
- Best insulation for all climate zones
- Contributes to the wellness of inhabitants
- Lasts the life of the structure

## Spray Polyurethane Foam

### Why FOAM-LOK®?

As a builder, you are faced with increased challenges every day. Construction timelines. Attracting buyers. Stringent building codes. Competition. While your choice in insulation won't solve everything, FOAM-LOK® spray foam by Lapolla can help alleviate some challenges.

Lapolla's FOAM-LOK® Spray Polyurethane Foam Insulation system is the most effective insulation system available. With exceptional energy efficiency performance, the product exceeds today's building code requirements. One product offering multiple solutions, it helps you reduce labor costs and stay on schedule.

**By offering up to 45% energy savings to homeowners for the life of the home, you'll also have a significant selling point to attract buyers.**

### THE PREMIER CHOICE

Spray foam's superior ability to seal the envelope ensures the highest performance in energy efficiency, energy cost savings, indoor comfort and air quality – making it the premier insulation choice of builders today.



**Weather, Moisture  
and Mold Resistance**



## YOUR OPTIMAL SOLUTION FOR...

- Meeting increasingly stringent energy codes
- Providing up to 45% energy bill savings, to your homeowner, for the life of the home
- Net zero energy & passive house design
- Eliminating need for multiple products to achieve air, thermal and moisture barriers
- Enhanced indoor comfort
- Improved wellness of homeowner
- Enhanced air quality
- Prevents asthma triggers
- Resilient construction
- Minimizing unwanted exterior noise
- Reducing warranty claims and callbacks



**FOAM-LOK enables you to achieve a superior building envelope and enhance the structural strength of the home.**

## ELIMINATES MULTIPLE PRODUCT APPLICATIONS OFFERING LABOR COST SAVINGS AND CONSTRUCTION SCHEDULE ASSURANCES

Lapolla FOAM-LOK Spray Foam Insulation allows you to eliminate and right-size other building materials during new home construction. FOAM-LOK reduces your product requirements, and your contractors labor costs, further reducing risks of construction delays.

- Reduce your HVAC size
- Reduce lumber and labor needed for complex framing
- Eliminate roof elements including raised heel trusses and hi/low vents
- Provide an air, thermal, and moisture barrier

*FOAM-LOK 2000-4G is the first spray polyurethane foam insulation worldwide to eliminate ozone depletion and reduce global warming impact.*

## SPECIFYING SUSTAINABILITY

With FOAM-LOK, you'll never have to worry about meeting today's increasingly stringent building codes. FOAM-LOK offers exceptional energy efficiency benefits and its sustainability statistics include:

- Reduced fossil fuel consumption, up to 45% energy consumption reduction for heating and cooling
- Over 3,000 plastic water bottles recycled into approximately 5000 board feet of insulation
- Reduced Global Warming Impact
- No Ozone Depletion

***Achieve required R-values utilizing 2"x 4" construction, alleviating the need and expense of 2"x 6".***

